

E

EINSTEIN

ST. GALLEN



Einstein St. Gallen Factsheet

Rooms & Suites

- 113 rooms and suites
- 2 barrier-free rooms
- Valet Parking
- 24/7 Reception
- Luggage service
- 250 parking spaces and 2 bus parking spaces

Eating & Drinking

- Einstein Gourmet: 18 points GaultMillau & 2 Michelin stars
- Bistro St. Gallen: international cuisine - 14 points GaultMillau
- Einstein Bar: over 100 Whiskeys
- Cigar Lounge: over 50 cigars
- Weinstein Vinotheque: Bordeaux and Swiss wine
- Wine cellar Einstein: over 3'000 wine positions

Attractions in the surroundings

- Textile museum, Art museum, Abbey District St. Gallen, Chocolarium
- Lake Constance, Boat trips, Rhine Falls
- Säntis, Appenzell Show Dairy, Appenzell Alpenbitter, Kronberg and many more

Fitness & Wellness

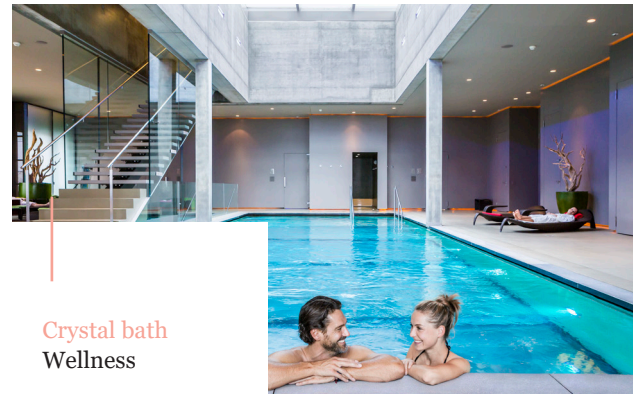
- over 3000 m² fitness and wellness area on five floors
- Steam bath, Bio and Finnish sauna, Crystal bath, massages

The Einstein - in the heart of St. Gallen

The stylish 4* Superior Hotel Einstein St. Gallen is situated in the heart of the city of St. Gallen in a quiet location. It is located right next to the pedestrian zone and between the Red Square and the world-famous UNESCO monastery quarter of the old town. The rooms and suites, renovated with attention to detail, are furnished with walnut and have pleasant pastel colors. Guests will find culinary variety at the 18-point GaultMillau and 2-star Michelin award-winning Einstein Gourmet, the 14 points GaultMillau internationally inspired Bistro St. Gallen and the Einstein Bar with its English club atmosphere. In the St. Gallen region, city meets nature. In the local recreation area "Drei Weiern" you can jump into the cool water in summer, in the Alpstein mountains you can enjoy a view into the far distance and the shore of Lake Constance invites you for a walk. In the textile museum you can learn more about the embroidery history of St. Gallen and watch the hand embroiderer at work. Other sights and the shopping street can be reached within a few minutes. A visit to the Abbey Library is especially worthwhile, as it is one of the oldest libraries in the world and the very first monastery map of St. Gallen is on display there. The St. Gallen Abbey District has been a UNESCO World Heritage Site since 1983.



Abbey Library
St. Gallen

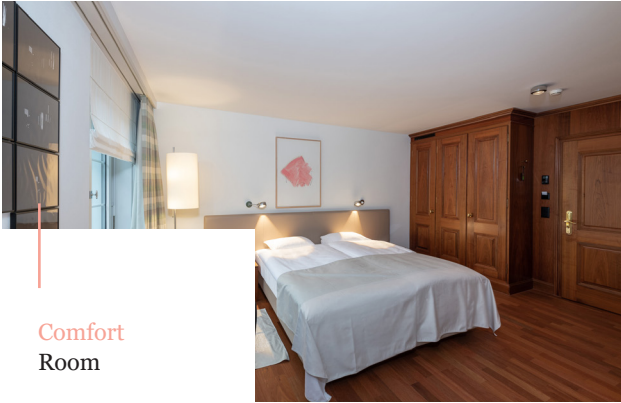


Crystal bath
Wellness

E

EINSTEIN

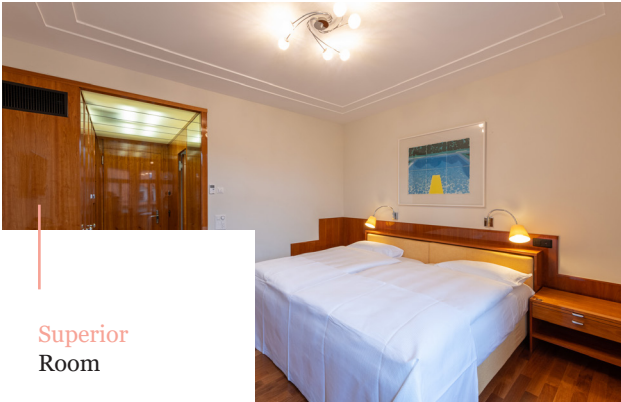
ST. GALLEN



Comfort
Room

Comfort Rooms 25m²

- simplistic yet modern
- furnished with a queen size or double bed (kingsize)
- Christian Fischbacher fine bed linen from St. Gallen
- pillow menu
- electric kettle for tea and instant coffee
- generous desk
- individually adjustable air conditioning
- bathrooms crafted from marble and granite, equipped with a shower



Superior
Room

Superior Rooms 30m²

- furnished with a queen size or double bed (kingsize)
- Christian Fischbacher fine bed linen from St. Gallen
- pillow menu
- high ceilings
- face a quiet side of the building
- Nespresso coffee machine
- individually adjustable air conditioning
- bathrooms crafted from marble and granite, equipped with a bathtub



Junior
Suite

Junior Suites 55m²

- furnished with a double bed (kingsize)
- Christian Fischbacher fine bed linen from St. Gallen
- pillow menu
- high ceilings
- view over the historic center of St. Gallen
- Nespresso coffee machine
- individually adjustable air conditioning
- sitting area
- large, light and airy bathrooms, crafted from marble and granite, equipped with a bathtub



Einstein
Suite

Einstein Suite 106m²

- high and light-flooded space
- two bedrooms with one queen and one double bed (kingsize)
- Christian Fischbacher fine bed linen from St. Gallen
- pillow menu
- spacious living room with dining table (three bathrooms)
- cozy sitting area in the living room
- Nespresso coffee machines
- individually controlled air conditioning.
- bright and spacious bathrooms made of marble and granite, equipped with bathtubs as well as a shower, double sinks and some with a bidet